

5th General Meeting

January 16, 2015

Fundraising



Amy & Briant

Upcoming Event

- **Waialae Car Wash (+1 Event)**
 - Saturday, January 17th
 - **Mandatory** Event for Conference
 - We **NEED** volunteers for second shift!
 - Shift Times:
 - 7:30 - 12 PM
 - 11:30 - 4 PM



Snack Packs

- Baldwin Snack Packs (65 available)
 - Sell for \$5 (\$2.35 profit)
 - Money Due April 3rd for active membership



Upcoming Fundraisers/Events

- **Bubbies Mochi Ice Cream**
 - Vote which flavors should be sold
 - Sales Start February 17th (tentatively)
- **World's Finest Chocolate**
 - Sales start February 2nd (tentatively)
- **Fundraising meeting**
 - Thursday, January 22nd @ 1pm in HH144 (CE room)

Social

Sheldon & Vincent



Upcoming Events

Hiking Social Manoa Falls

- Saturday February 7

Social Committee meeting

- Friday January 23rd at 3:00pm at HH144(CE room)

“Fin”



“Vin”

Community Service

Kaniela and Vince

Upcoming Events!

- Matson - Ka Ipu 'Aina (tentative event)
- Kanewai Lo'i
 - Saturday, February 7 @ 7:45am - 12pm
- Hanauma Bay Clean Up (w/ Chi Ep)
 - Date and time: TBA

- Next Community Service Committee Meeting
 - Friday, January 23 @ 11:30am in HH144



Conference

Michelle & Reyn

Important Dates

Today: Mandatory Captains Meeting

-1:00pm in the CE Room (HH 144)

January 23rd (Fri.): Mandatory Conference Meeting

-4:00 pm in HH 244

Important Dates

January 23rd (Fri.)-January 30th (Fri.): Second down payment collection

- Times will be announced via email
- Conference booklet form and 3 other forms due with payment
- No late payments will be accepted

If you are interested in helping out with planning Conference, please email Michelle (mchinen@hawaii.edu) or Reyn (reynrs@hawaii.edu)

Outreach



Lauren & Bonni

Update: Jr. Engineering Night

Thank you for helping!



Upcoming Events

- Engineering Olympics ~ Jan. 24th
- Junior Engineering Expo ~ March 6th
- High school Industry Challenge ~ April 10th

★ Next Committee Meeting ~

Next Tuesday (Jan. 20th)

11:00 am CE room

Concrete Canoe

Kiana & Nainoa

Upcoming Events

- Aesthetics Meeting
 - When: 1/19 @ 2:00pm
 - Where: HH 144 CE room
- Aesthetics Meeting
 - When: 1/23 @ 2:00pm
 - Where: HH 144 CE room
- Paddling Practice 1/24
 - When: 1/24 @ 9:00-11:00am
 - Where: Keehi Lagoon



Steel Bridge



Sheldon, Bryce, and John

Fabrication Meetings

- Every Monday & Wednesday
 - Starting Jan 26
 - Time: 6-9PM
 - Location: Structures Lab HH 102
- Current Projects:
 - Truss Jig
 - Leg Jig
 - Connections

Questions? Contact:

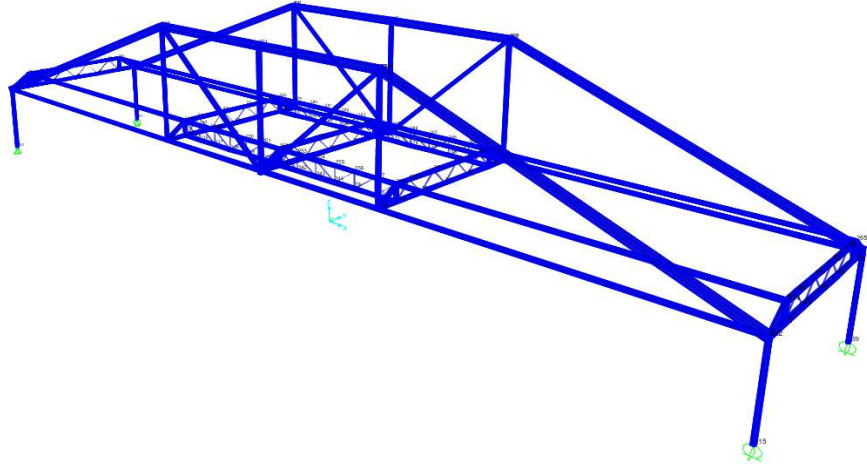
Sheldon- sheldon7@hawaii.edu

John- jkim75@hawaii.edu



Design Meetings

- Finalizing overall design. Almost done with connections.
- Meetings:
 - TBA
- Questions? Email Bryce at iwamib@hawaii.edu



FE EXAM COURSE FOR SPRING

- 16 Live Lectures
- See us for flyers!
- Payment deadline:
 - Thursday, Jan. 22nd

FE PREP COURSE

Offered by the ASCE Student Chapter at the University of Hawaii at Manoa

Course includes: 16 LIVE review lectures by graduate students
FE Civil Review Manual (Lindeburg, 1st Ed. 728pp) – for the new FE format
NCEES FE Reference Handbook (264pp use w/exam)

Location: UHM campus, Holmes Hall 244

Course Schedule:

Tuesday (6:15pm-7:45pm)

Thursday (6:15pm-7:45pm)

January 27- Mathematics
February 3- Fluid Mechanics
February 10- Environmental Engineering
February 17- Statics
February 24- Mechanics of Materials
March 3- Structural Design
March 10- Construction
March 17- Engineering Economics

January 29- Probability/Statistics
February 5- Hydraulics & Hydrology
February 12- Geotechnical Engineering
February 19- Dynamics
February 26- Materials
March 5- Transportation & Surveying
March 12- Computational Tools
March 19- Ethics and Professional Practice

Registration and Payment Deadline: Thursday, January 22, 2015

Course Fee: \$300 (ASCE members)
\$350 (Non-ASCE members)
\$120 (Review lectures only, no books)
\$200 (Books only, no lectures) – [FYI Amazon.com: \$243]
\$50 (Late registration fee for payments after January 22)

To register for the course, please contact Dr. Roger Babcock by the deadline.
E-mail: rbabcock@hawaii.edu
Phone: (808) 956-7298

ASCE Parent Chapter Trivia Dinner (+1 Meeting)

- **When**
 - Thursday, January 22nd @ 5:30pm
- **Where**
 - DAVE & BUSTERS
- **Cost**
 - \$20- subject to change
- **RSVP**
 - E-mail asce@hawaii.edu by Tuesday, Jan. 20th

Holiday Selfie!

- Visit our facebook to vote for your favorite holiday selfie by January 23rd
- Selfie with most “likes” wins \$20 Amazon Gift Card
- Category:
 - Most Holiday-like
 - Most Creative
 - Funniest
 - Group

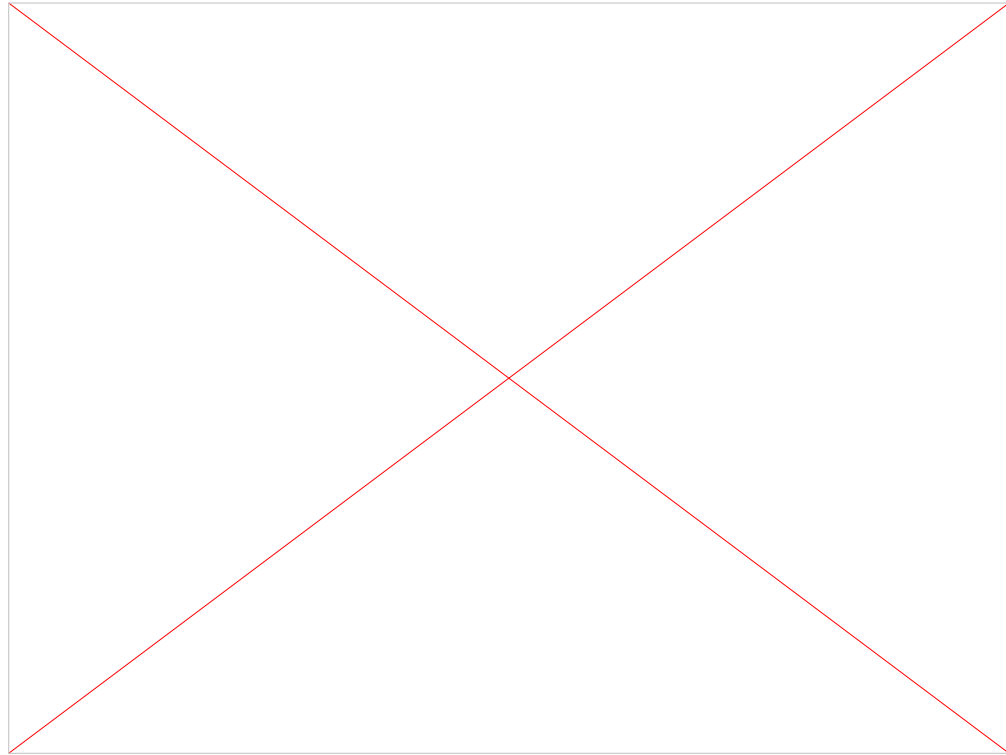
Most Holiday-Like



Most Holiday-Like



Most Holiday-Like



Most Creative



Funniest



Funniest



Funniest



Funniest



Group



Group

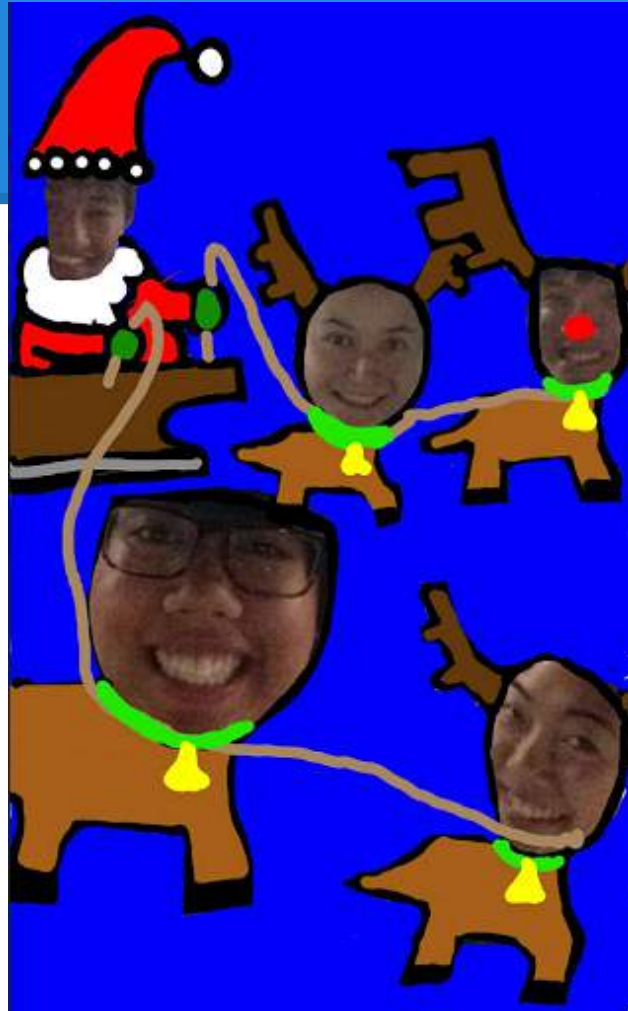


Group



Group

ASCE OFFICERS WEE!



Got Friends?

BRING THEM!

NEXT MEETING

- Friday, February 13 @ 11:30am

