

STUDENT CHAPTER

ASCE

UNIVERSITY OF HAWAII AT MANOA

THIRD GENERAL MEETING

October 28, 2014

Guest Speaker

- Hensel Phelps
 - Tom Diersbock, *Operations Manager*
 - Rick Crago, *Project Manager*
 - Kate Langford, *Field Engineer*
 - Ron Mitchell, *General Superintendent*



HENSEL PHELPS

Plan. Build. Manage.

Social Committee



Vincent & Sheldon
Email:
Sheldon → sheldon7@hawaii.edu
Vincent → vhdtran@hawaii.edu



Thank you to all who made the
Homecoming Tailgate one to
remember!



Homecoming Tailgate!!!

Upcoming Events

Photo Scavenger Hunt!

- Time: 4-7PM
- Date: November 15, 2014
- Location: Waikiki Strip
- RSVP: See ASCE announcement (by Nov. 12)

Sporting Event Day

- Time: TBA
- Date: TBA
- Location: Magic Island (TBD)
- Sports included: Soccer, frisbee, concrete bowling, etc.

Next Social Committee Meeting: TBA





Fundraising

Amy and Briant

Fundraising Reminder

- Last day to turn in money and unsold tickets for Krispy Kreme.



Krispy Kreme Company Drop-off

- Drop off to Companies (+1 event)
 - Drop off on Wednesday November 5th between 10AM - 3PM
 - Need 4 groups of 2 or more people
 - Sign up: *SEE OFFICERS OR FUNDRAISING CHAIRS*

Current Fundraisers (Slanging)

- Baldwin Snack Packs (150)
 - Sell for \$5 (\$2.35 profit)
 - Money Due by Thursday Nov 20th
- Festival of Giving
 - Sell for \$10 (\$10 profit)
 - November 7-9 at Ward Center
 - Money due by November 10th



FESTIVAL
of **GIVING**

EXCLUSIVE
SAVINGS
at **OVER**
85 WARD
CENTERS
SHOPS &
RESTAURANTS

OFFERS VALID
FRIDAY THROUGH SUNDAY
NOVEMBER 7 - 9, 2014

PASSPORTS **\$10** EACH

Fundraising

- Pick up Snack Packs or Festival of Giving Passports at the CE room (HH 144)
 - Start Wednesday 10/29 - Thursday 11/20
 - Mondays 10 - 1
 - Tuesdays 12 - 4
 - Wednesdays 10 - 1
 - Thursdays 12 - 4
 - Fridays 10 - 1

Save the Date

- **Waialae Chevron Car Wash**
 - Saturday, November 29th
 - Event point counts toward next semester
 - Need at least 20 volunteers per shift
 - Shift times:
 - 7:30-12PM
 - 11:30-4PM



“Fin”



“Vin”

Community Service

Kaniela and Vince

Ke'ehi Park Clean Up

THANKS FOR SERVING YOUR HAWAII!



Mililani Make-A-Difference Day

THANKS FOR SERVING YOUR HAWAII!



Upcoming Events

- He'eia Stream and Lo'i Restoration
 - Saturday, November 15, 2014 (8:45 am - Noon)
 - Clear invasive plants
 - Reforest with native plants
 - Trail maintenance
 - Working with high school ASCE members!

Interested?

Fill out RSVP form in next ASCE announcements email by November 8th.

Upcoming Events

- **Community Service Committee Meeting**
 - Friday November 7, 2014 (1:30 pm - 2:00 pm)
 - CE Room

Join Us!

“Fin & Vin”



akfern34@hawaii.edu



vrobinol@hawaii.edu

Outreach



Bonni & Lauren

Outreach Updates

- High School Industry Challenge
POSTPONED
 - due to low high school participation
 - will be rescheduled, date TBD
- Engineering Olympics **POSTPONED**
 - due to low high school participation/scheduling conflicts
 - Rescheduled for January 24, 8am-1pm

Outreach Updates

- He'eia Clean-up
 - Saturday, November 15, 2014 (8:45 am - Noon)
 - High School ASCE members will attend
 - please sign up with community service!

Outreach Updates

- **Jr. Engineering Night**
 - Moanalua Elementary
 - Tuesday, December 2 @ 5:30pm
 - Need 10 volunteers for 2 activities
- **Next Outreach Committee Meeting**
 - Friday, November 14, 12:30pm, in CE Room
 - come with game ideas!



Conference

Reyn & Michelle

Conference

- Conference application forms due this Friday (Oct 31st)
 - Reyn will be in the CE room (HH144) from 1-3 pm on Friday to collect applications
- Collection of first down payment of \$300
 - Nov.3-14
 - Monday: 10:00-1:00(CE Room), 1:30-4:00(POST lab)
 - Wednesday: 10:00-1:00(CE Room), 2:30-4:00(POST lab)
 - Thursday: 10:30-6:00(POST lab)
 - Friday: 11:30-2:00(POST lab), 3:30-6:00(CE Room)

Conference

- Members will be notified via email if they are selected to be a conference attendee on Tuesday, November 25th
- Refunds of first payment will be given to those who aren't selected or decide not to go by December 8th

Next Committee Meeting will be on
Wednesday, November 26th, 12:30-1:30pm in
the CE room (HH 144)



Concrete Canoe

Get Involved!

- **Mold Construction**
 - Canceled until further notice

- **Mix Design**
 - Every Monday & Thursday
 - Time: 4pm - 6pm, 5pm - 7pm
 - Location: HH 102 (Structures Lab)



Questions?

Please contact:

- Kiana Yamat
 - kyamat@hawaii.edu
- Nainoa Pihana
 - nphiana@hawaii.edu

Steel Bridge



Captains: John, Sheldon, & Bryce

Fabrication Meetings

- Every Monday & Wednesday
 - Time: 6-9PM
 - Location: Structures Lab HH 102
- Current Projects:
 - PBB Stands for Junior Engineering Expo
 - Prototypes of connections for actual bridge

Questions? Contact:

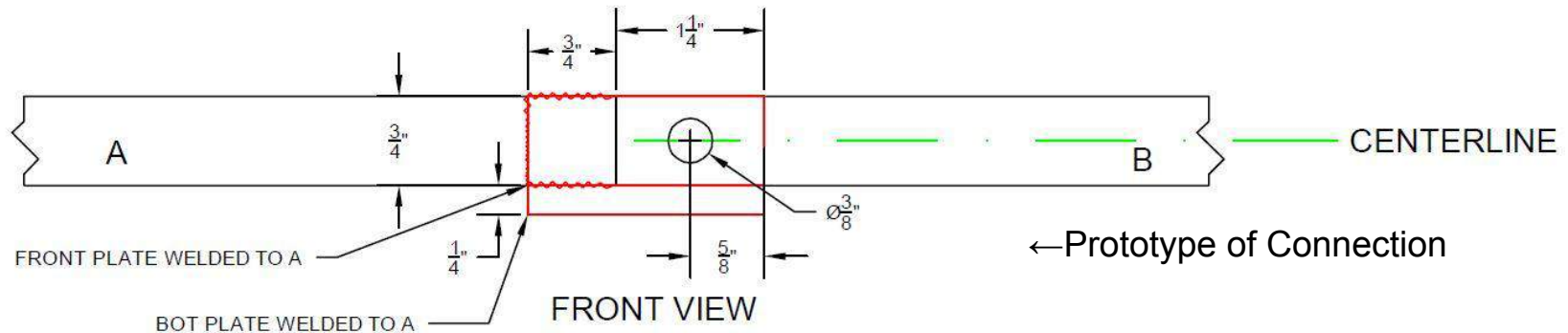
Sheldon- sheldon7@hawaii.edu

John- jkim75@hawaii.edu



Design Meetings

- Currently designing connections and overall bridge
- Meetings:
 - Mondays and Wednesdays: 3:30-6:30 PM @ CE Room (HH144)
- Questions? Email Bryce at iwamib@hawaii.edu



Upcoming Events

- YMF Meeting (November)
 - Hoku Brewing (580 N Nimitz Hwy)
 - Wednesday, November 5 @ 6pm
- WTS Career and Networking Event
 - Oahu Country Club
 - Wednesday, October 29 @ 6-8pm

Upcoming Events

- **Holmescoming**
 - Holmes Hall Ground Floor
 - Date: Nov 21st
 - 8AM - 10AM (Set up)
 - 10AM - 12PM (Set up)
 - 3:30PM - 6:45PM (Event)
 - 6:30PM - 10PM (Event)
 - Mandatory Informational Meeting
 - Wednesday, November 12 @ 5-6pm
 - Holmes Hall Ground Floor
 - Distribution of shirts and information

HALLOWEEN CHALLENGE

- Objective
 - Transfer the most marshmallows you can to your partner using....
 - Keep going till music stops
 - Winner gets first pick of random grab bag (each bag has a mystery)



AWWWWW YIIIIIIIS

- COE Student Project Grant
 - Funding for Concrete Canoe and Steel bridge projects
 - Selected to be MAIN presenter in annual banquet in April



Thanks and See you next time!

- Next General Meeting
 - Friday, November 21
 - 1:30 - 2:30 pm
 - HH244